

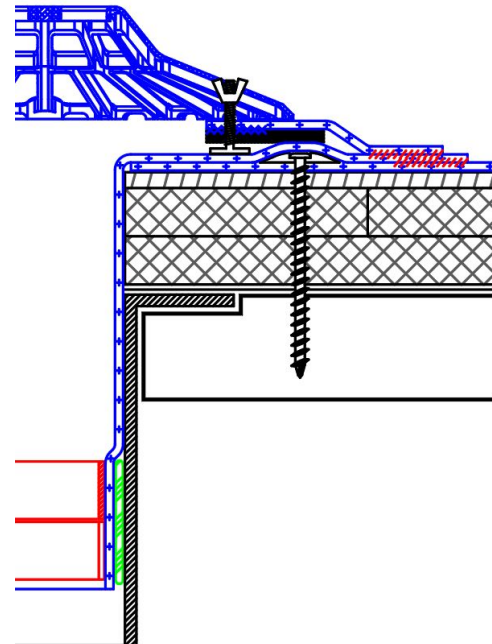
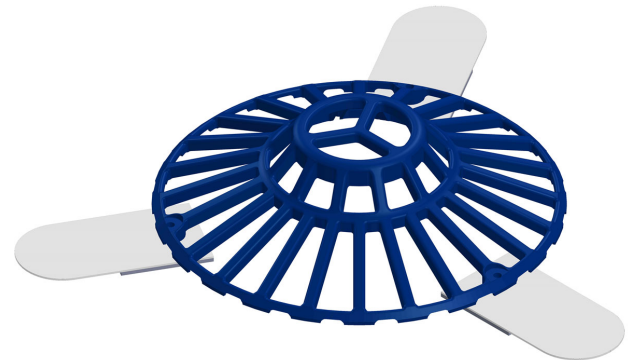
DURO-LAST® DRAIN GUARD

DESCRIPTION:

The Duro-Last® Drain Guard is a roof drain cover used on Duro-Last roof drain installations to help protect against drain clogs. The Drain Guard has a unique horizontal, low profile and open slot design. The horizontal design provides a larger functional area of the drain cover, or net free area. This will allow for greater water flow and prevent clogging caused by build-up on the drain cover.

The Drain Guard consists of a rust and corrosion-resistant blue cast aluminum cover and three weldable Duro-Last membrane tabs. Each tab is attached with stainless steel fittings and wing nuts. The wing nuts can be unscrewed to remove the strainer for cleaning of the drain.

- Cover dimensions:
 - Diameter: 13 inches
 - Height at center: 3 inches
- Net free area: 82.905 square inches



VOLUMETRIC FLOW RATE FOR NOMINAL 4-INCH DRAIN – VERTICAL PIPE ROOF DRAIN TEST		
Head of Water (in.)	With Drain Guard (GPM)	Open Drain (GPM)
1	57	69
2	85	90
3	113	138
4	139	214
5	160	253
6	189	297

3rd party testing was completed as described in ASPE/IAPMO/ASPE Z1034-2015 Test Method for Evaluating Roof Drain Performance.

ORDERING:

Drain Guards can be ordered individually.

- White tabs (Item #18301)
- Tan tabs (Item #18301B)
- Gray tabs (Item #18301G)

STORAGE AND HANDLING:

- Always store in a dry location protected from the elements.

PRECAUTIONS:

- Wear proper personal protective equipment, such as gloves and eye protection.

INSTALLATION:

1. Limitations
 - a. The Drain Guard must not be mechanically fastened to the roof deck.
 - b. The Drain Guard is not a watertight detail by itself. Refer to Detail Drawing 2021 for complete installation requirements.
 - c. The contractor is responsible for compliance with all applicable building codes.
2. Install a Duro-Last Drain Boot as per Detail Drawing 2021 prior to installing the Drain Guard.
3. Center the Drain Guard over the drain and weld each of the three membrane attachment tabs to the deck membrane with a minimum 1-1/2 inch weld.