

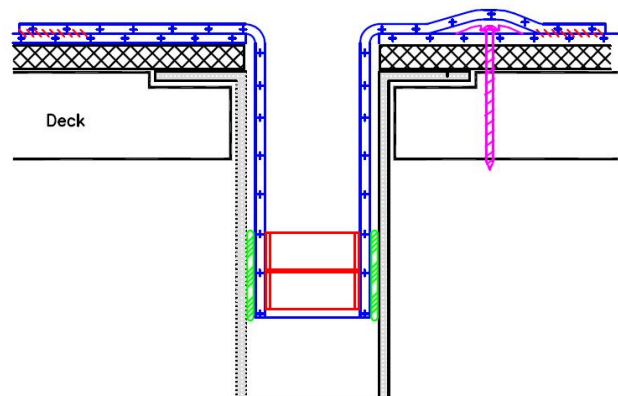
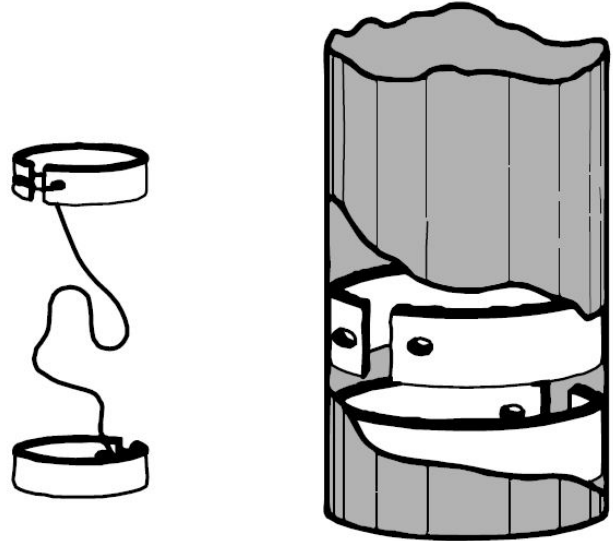
DURO-LAST[®] COMPOSITE DRAIN RINGS

DESCRIPTION:

Duro-Last[®] Composite Drain Rings, or “CDRs”, are manufactured from a state of the art epoxy-fiberglass composite. The rings are shipped tied together with a cord approximately 12 inches (305 mm) long. Their purpose is to provide compression in order to create a positive seal between the drain boot and the drain pipe.

INSTALLATION:

1. Insert the first drain ring as low into the installed drain boot as possible, 6 inches (152 mm) minimum depth. Cut the compression ring cord to expand the ring.
2. Install the second ring in a like manner with the opening located opposite the opening of the first ring. Cut the compression ring cord to expand the ring.
3. Sealant and CDRs must be installed at the same depth within the drain.
4. Refer to detail 2020 for installation information.



Composite Drain Rings
(Install per detail drawing 2020)