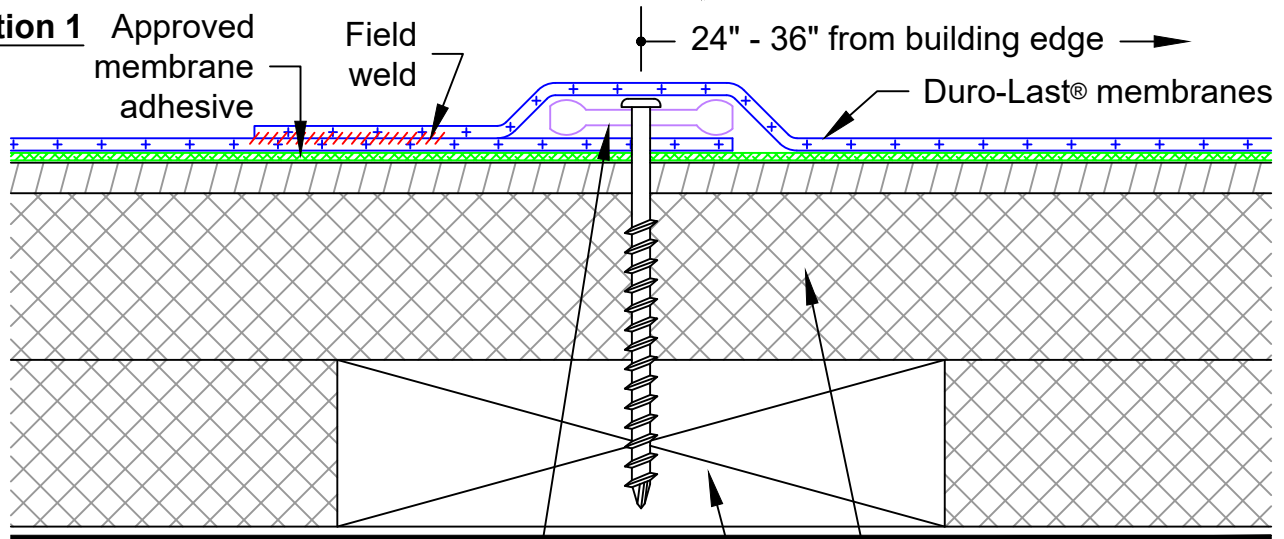


Option 1

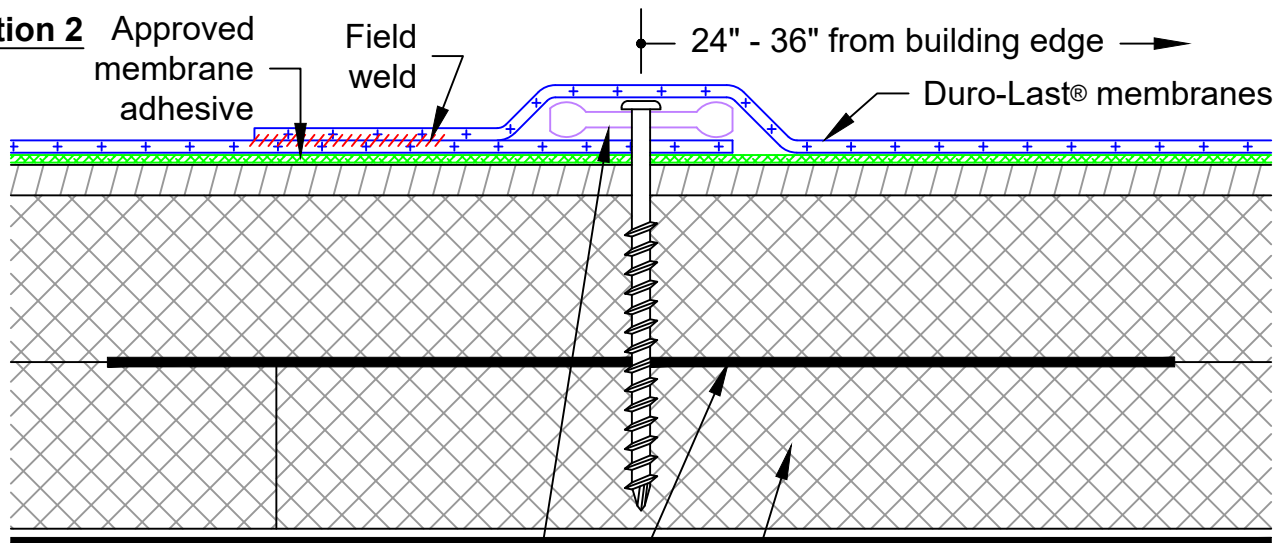


Termination Bar, Cleat Plate® or 3-Inch Metal Plate and approved Duro-Last fasteners spaced 6 inches on center (1 inch penetration into 2 x 6 wood nailer, min.)

Refer to Detail Drawing AS9060 for assembly requirements

2 x 6 wood nailer adhered to deck with 2 continuous rows of approved Duro-Grip® adhesive

Option 2



Termination Bar, Cleat Plate® or 3-Inch Metal Plate and approved Duro-Last fasteners spaced 6 inches on center (1 inch penetration into 18 gauge metal, min.)

Rigid board insulations above and below 18 gauge metal must be a minimum of 1-1/2 inches thick

12-inch wide continuous 18 gauge metal adhered to top of first layer of insulation with 3 continuous rows of approved Duro-Grip® adhesive

Note: Refer to Detail Drawing AS9060 for peel stop requirements.

REVISED: 02/18/2019

INSULATION DETAIL FOR ADHERED SYSTEMS

PREVIOUS: 08/03/2017

PEEL STOP INSTALLATION

SCALE: NONE

NEW CONSTRUCTION OR RE-ROOF